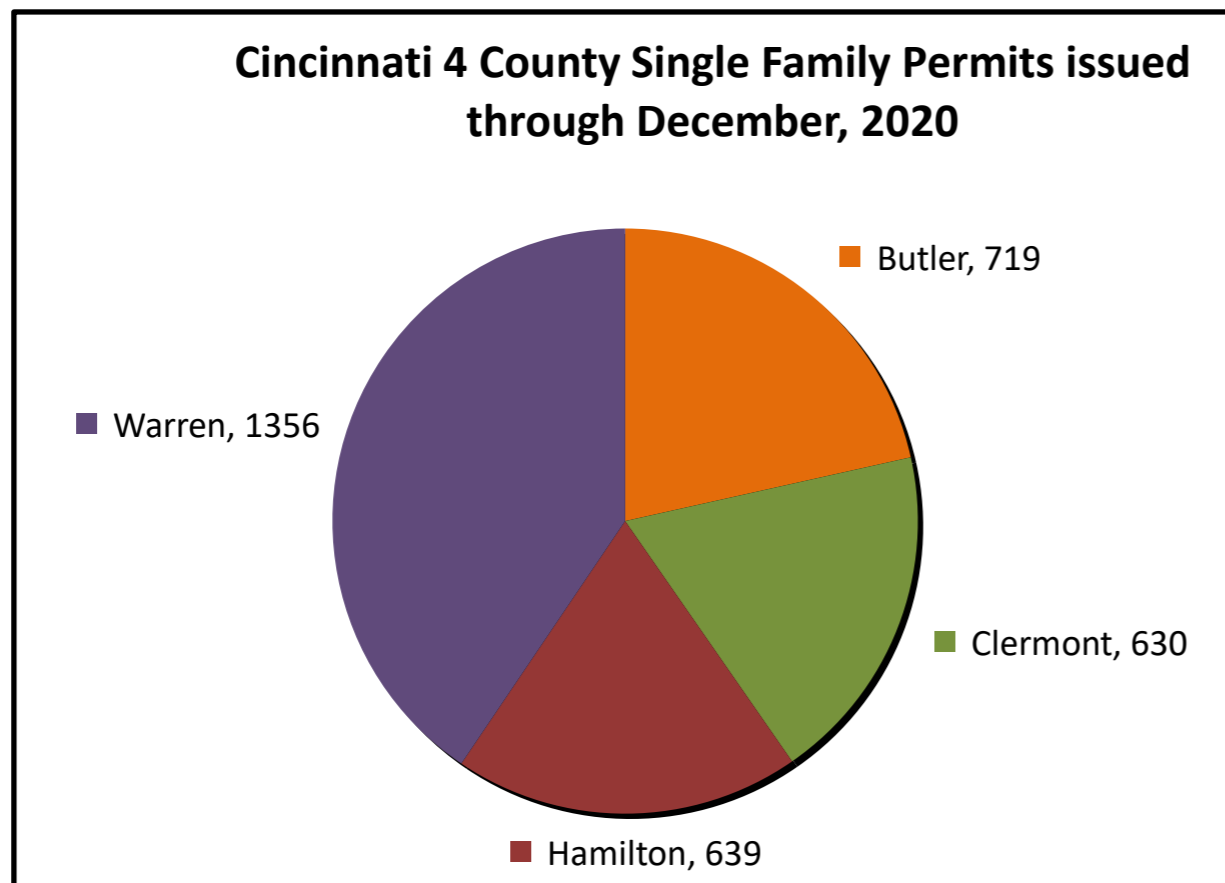
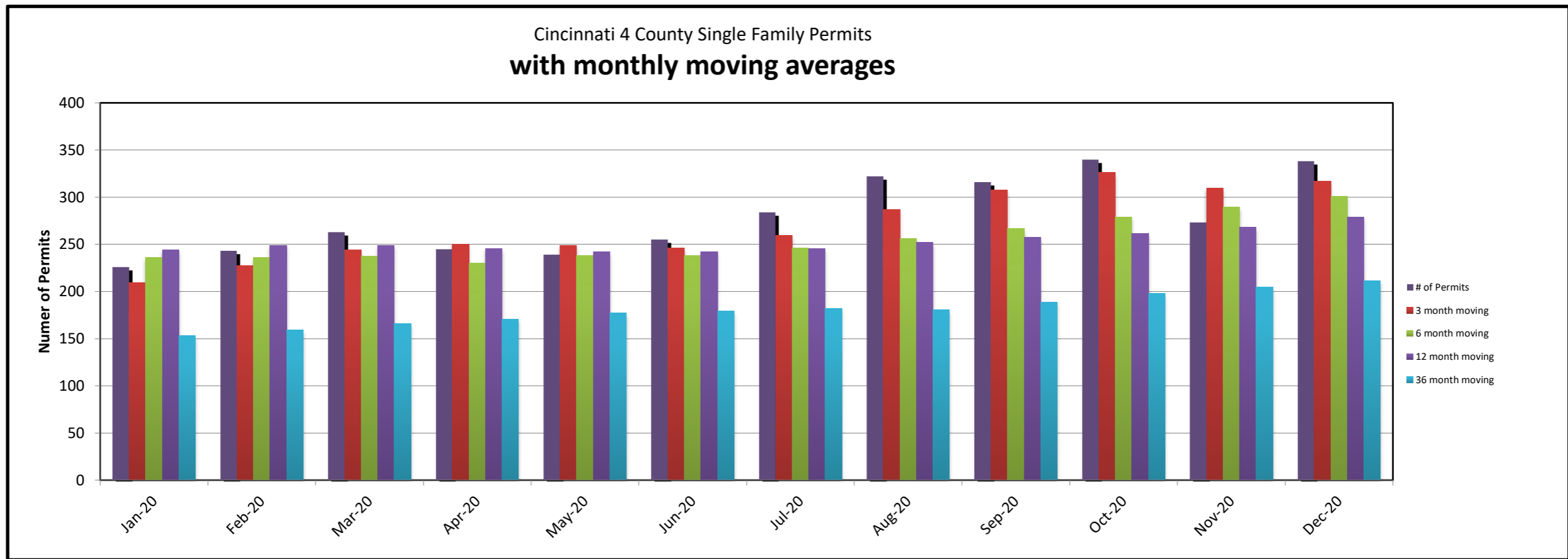
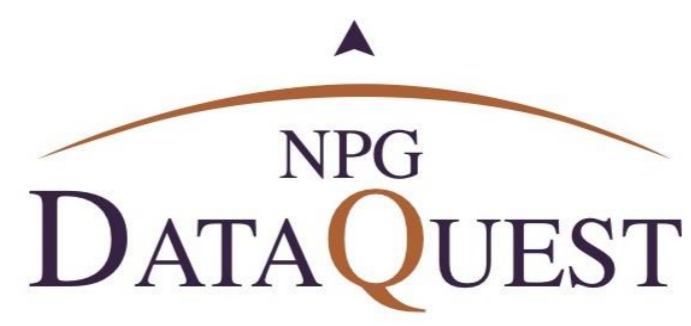


# Cincinnati Residential Building Permits

## Butler, Clermont, Hamilton & Warren Counties





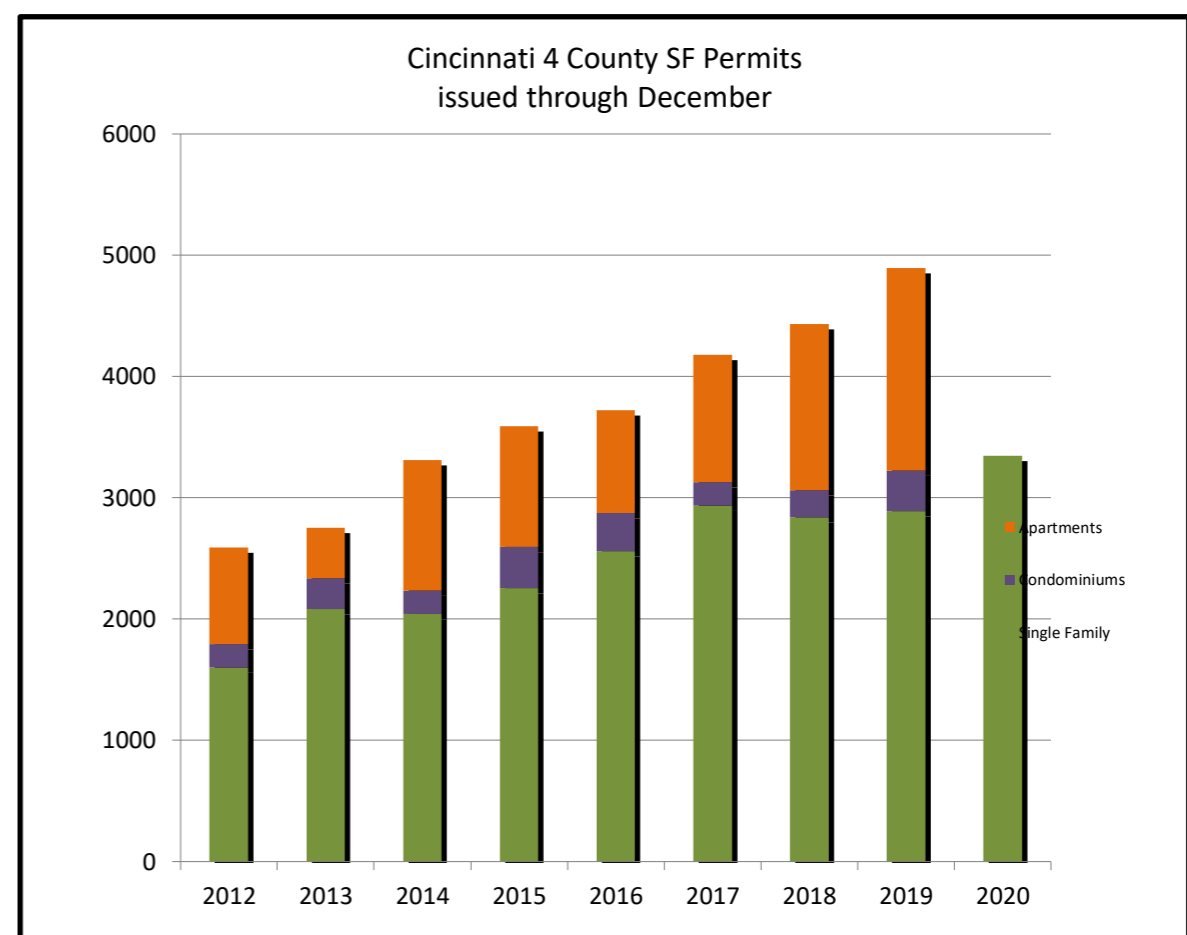
NPG  
**DATAQUEST**

NPG DataQuest provides new residential construction information for a twelve county region covering Cincinnati, Northern Kentucky and Dayton. For more details on this information, contact Mark Stenger at 513/886-4632 or [npgdataquest@outlook.com](mailto:npgdataquest@outlook.com)

Total Permits by Month						
	2015	2016	2017	2018	2019	2020
January	117	185	237	589	188	233
February	142	229	270	260	687	268
March	212	254	357	337	279	287
April	409	363	338	473	660	256
May	276	334	334	340	398	251
June	326	355	439	313	287	272
July	326	297	505	321	338	298
August	242	628	656	410	258	359
September	526	285	249	228	529	360
October	245	307	283	244	325	368
November	597	231	209	486	721	311
December	172	252	300	433	227	362

Total Units by Year						
	2015	2016	2017	2018	2019	2020
Single Family	2,253	2,561	2,935	2,840	2,891	3,344
Condominiums	344	311	192	223	332	281
Apartments	993	848	1,050	1,371	1,674	-
<b>TOTAL</b>	<b>3,590</b>	<b>3,720</b>	<b>4,177</b>	<b>4,434</b>	<b>4,897</b>	<b>3,625</b>
% Change From Previous Year	12.2%	3.6%	12.3%	6.2%	10.4%	-26.0%



\*YTD